

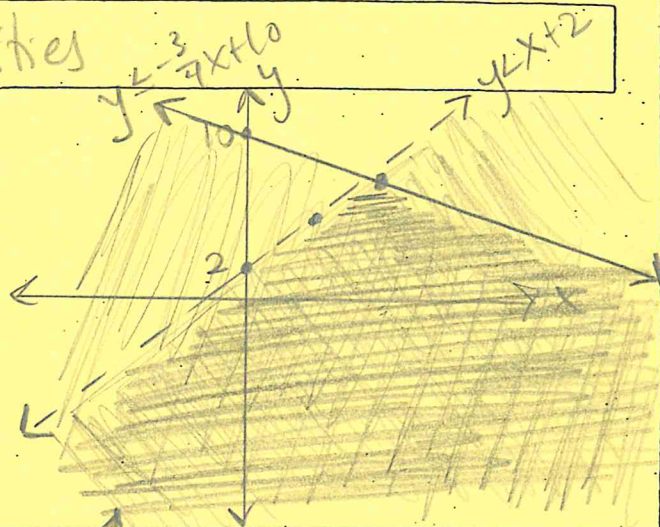
[9-58]

Graphing Systems of Inequalities

Example: Graph

$$y < x + 2 \text{ and } y \leq -\frac{3}{4}x + 10$$

- ① Graph, shade, label each line
- ② Make sure the overlapping shading is OBVIOUS!



[9-90]

Graphing Systems of Inequalities

Ex. Graph $y < x + 2$ and
 $y \leq -\frac{3}{4}x + 10$

- ① Graph, shade, label each line
- ② Make sure the overlapping shading is obvious!

