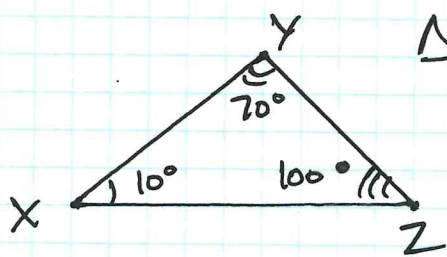
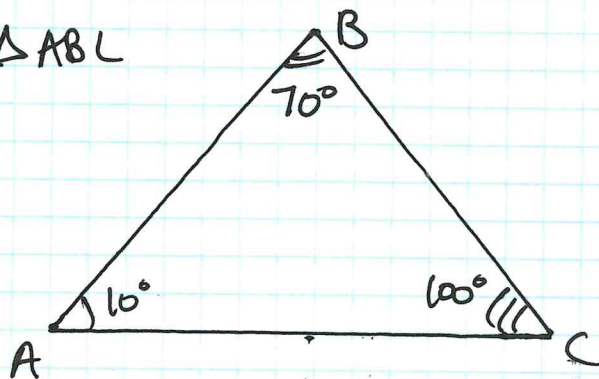


# Toolkit # 22: Angle Angle Similarity (AA~)



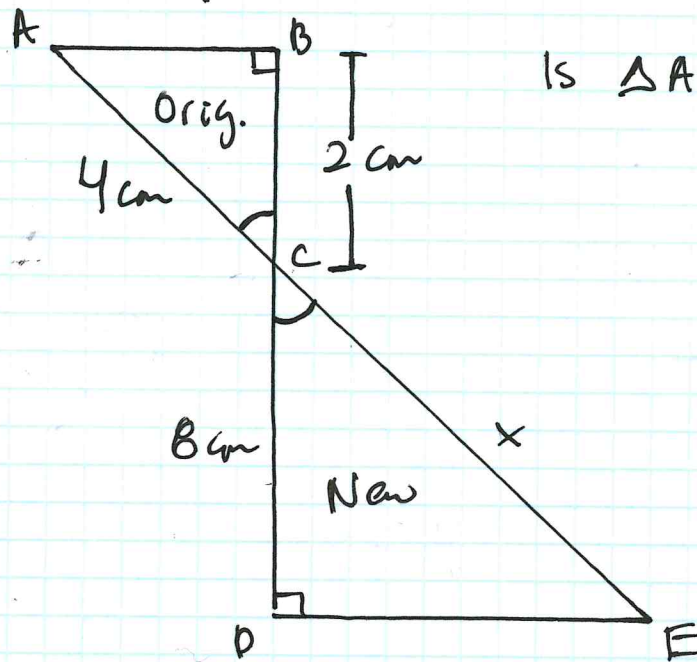
$$\triangle XYZ \sim \triangle ABC$$



If two triangles have 2 congruent corresponding angles, then the triangles:

- (1) Are Similar.
- (2) Have the same measurement for the 3rd angle.

## Warm Up



Is  $\triangle ABC \sim \triangle EDC$ ?